



PARENT ENGAGEMENT

**Strategies employed by the Robla
Elementary School District**



ROBLA FACTS

- ◀ 2,500 STUDENTS IN PRE-K THROUGH 6TH GRADE
- ◀ 5 ELEMENTARY SCHOOLS
- ◀ 1 DISTRICT PRESCHOOL
- ◀ DIVERSE STUDENT POPULATION
- ◀ 45% ENGLISH LEARNERS
- ◀ 93% UNDUPLICATED COUNT
- ◀ 20 LANGUAGES SPOKEN BY OUR FAMILIES

PARENT ENGAGEMENT STRATEGIES

Some Unique Approaches

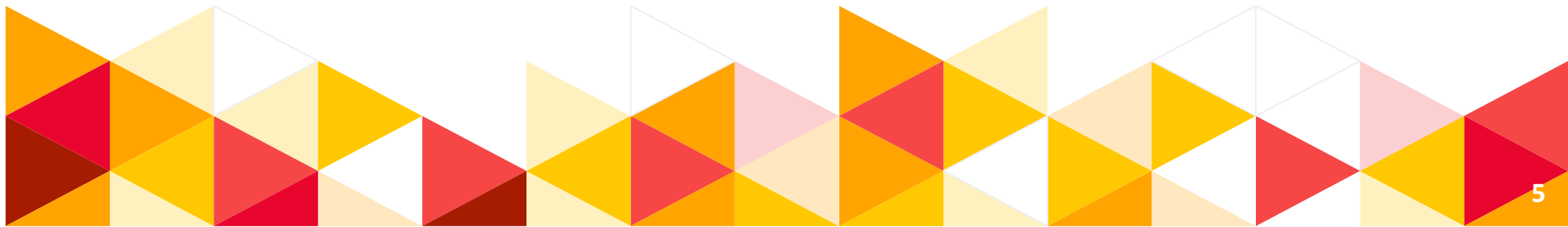


COMMUNITY OUTREACH ASSISTANTS

- ◀ FULL-TIME (8 HOUR) CLASSIFIED EMPLOYEES
- ◀ SPANISH, HMONG, RUSSIAN, AFRICAN-AMERICAN
- ◀ TRANSLATION
- ◀ RELATIONSHIP WITH FAMILIES
- ◀ STUDENT CONTACT
- ◀ HOMEWORK HELP AFTER SCHOOL

RESILIENCE

- ◀ PROFESSIONAL LEARNING FOR **ALL** STAFF
- ◀ IMPORTANT PARTNERS
 - ◀ ROBERTS FAMILY DEVELOPMENT CENTER
 - ◀ RESEARCH CONSULTANT
- ◀ OFFERED THROUGHOUT THE SCHOOL YEAR
- ◀ CULTURAL SENSITIVITY
- ◀ POVERTY SIMULATION





PARENT EMPOWERMENT

- ◀ COMMUNITY PARTNER
- ◀ 2-3 TIMES PER YEAR
- ◀ CELEBRATION OF CULTURE
- ◀ PARENTS AS LEARNERS
- ◀ EDUCATIONAL & COMMUNITY EXPERTS
- ◀ PROFESSIONAL LEARNING FOR STAFF

STUDENT & FAMILY HEALTH

COMMUNITY PARTNERSHIPS

- ◀ HEALTHY NUTRITION
 - ◀ UNITED WAY
 - ◀ HEALTH EDUCATION COUNCIL
- ◀ FOOD ACCESS
 - ◀ SACRAMENTO FOOD BANK
 - ◀ UNITED WAY
 - ◀ HEALTH EDUCATION COUNCIL
- ◀ TELEMEDICINE
 - ◀ HAZEL
 - ◀ SCOE



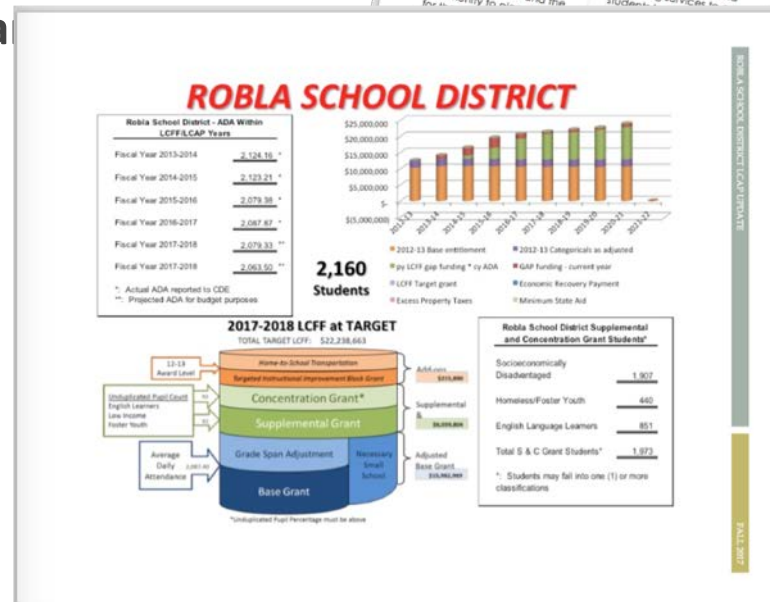
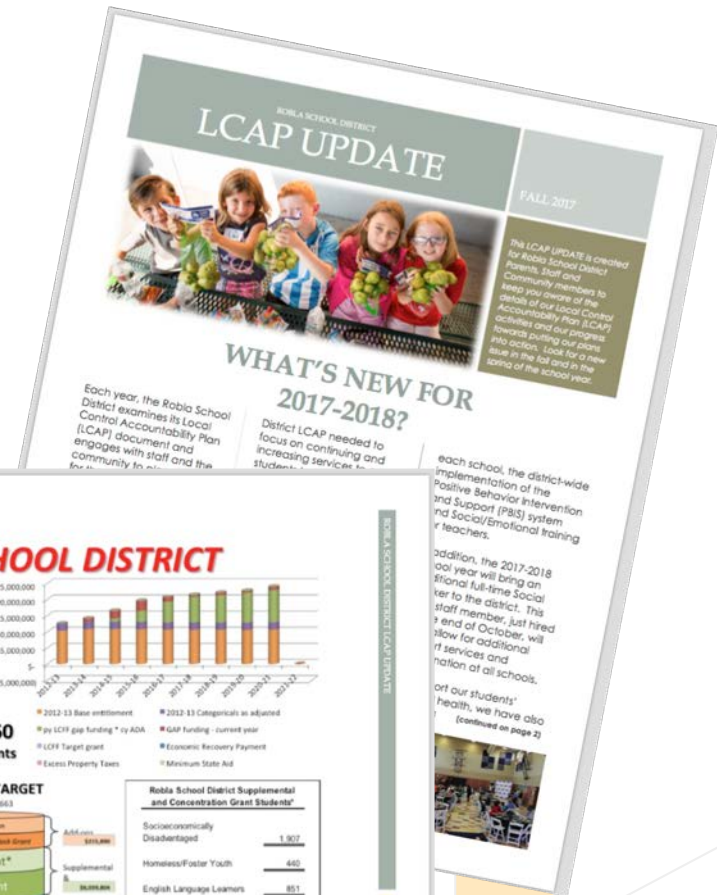
COMMUNICATION

LCAP UPDATE NEWSLETTER

A “parent friendly” version of our Local Control Accountability Plan

Highlights:

- Current Actions
- Measures of Success
- Understanding LCFF



THANK YOU!

Ruben Reyes
Superintendent
Robla Elementary School District

