

Districtwide Family Engagement

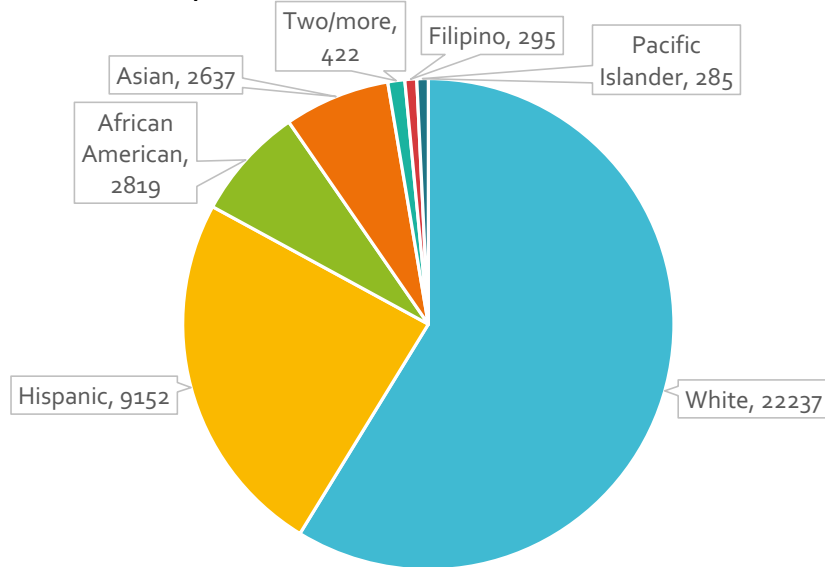
Kate Hazarian, Director

Family Engagement and Partnership Development



San Juan Unified Profile

Students by Race

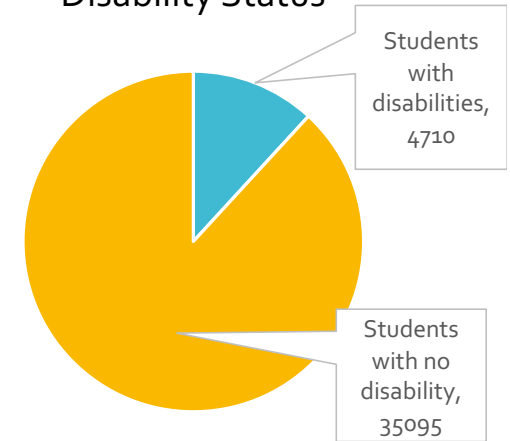


39,805 students

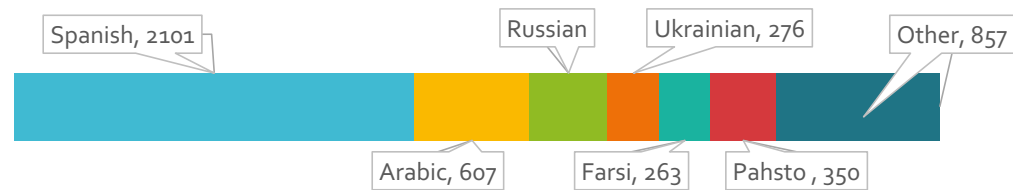
Boys: 20,511...51.5%

Girls: 19,293...48.5%

Disability Status

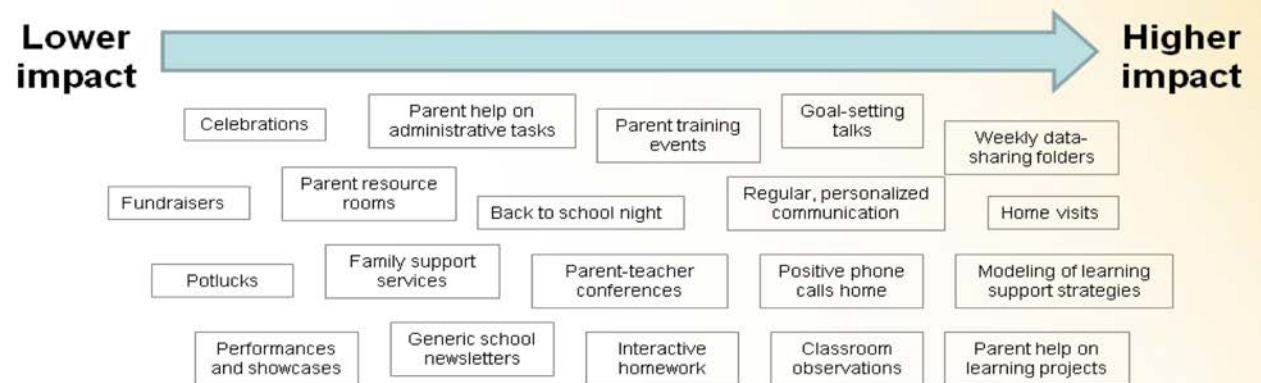


Languages Spoken by English Learners



Family Engagement Defined

Relative Impact of Family Engagement Strategies on Student Learning



FLAMBOYANT
FOUNDATION

Flamboyant Foundation defines family engagement as collaboration between families and educators that accelerates student learning.

Our Challenges

- Equitable family voice
- Parent education classes
- Volunteerism = involved parents
- Parent Leadership Academy
- Problem Resolution Process
- On-demand family education
- Setting high expectations at home (growth mindset)




Our Strategies

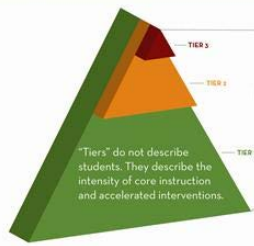
San Juan Unified


MULTI-TIERED SYSTEM OF SUPPORT MODEL

MTSS: A layered continuum of practices and supports which responds to the academic, emotional, social and behavioral needs of each student.



1. Responsive core instruction
2. Data-based decision making
3. Universal screening
4. Layered continuum of supports
5. Family & community partnerships





1. **COLLECT & ANALYZE DATA**
What are the needs?
2. **PLAN & IMPLEMENT**
What are we going to do about it?
3. **MONITOR & ADJUST**
Is the support working?
4. **EVALUATE & RE-ADJUST**
Do we need to change, modify or replace supports?

▲ TIER 1: Meets needs of 80% of students
Core / Universal Instruction & Intervention

- All students including special education, 504, health plan and gifted & talented
- Evidence-based, high-quality, culturally and linguistically responsive general education instruction, strategies and support for all students
- Focus is on preventing concerns about learning, attendance or behavior
- Accelerated research-based instruction
- Targeted, skill-based classroom interventions for students not responding to core instruction
- Enrichment opportunities for advanced students

▲ TIER 2: Meets needs of 15% of students
Targeted Group Interventions

- Some students (at risk)
- Accelerated research-based intervention
- Assessment-based
- Rapid response to student needs
- Continued access to core instruction

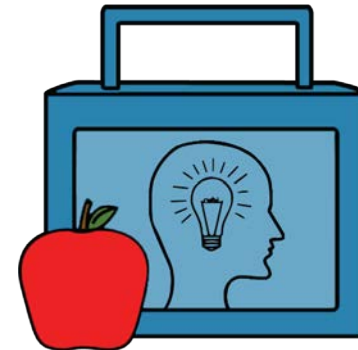
▲ TIER 3: Meets needs of 3-5% of students
Intensive, Individual Interventions

- Few, individual students
- Accelerated research-based intervention
- Assessment-based
- High-intensity, longer duration
- Continued exposure to core instruction

For more information visit www.sanjuan.edu/mtss

aptt

Academic
Parent-Teacher
Teams



THE
LEARNING
LUNCH
Podcast

The FACE Team



www.sanjuan.edu/family

Kate Hazarian, Director

Kate.Hazarian@sanjuan.edu

(916) 971-7929