

# Accountability and the 2018 California School Dashboard

## Sacramento County Office of Education Fall Curriculum Breakfast

---

Cindy Kazanis, Director  
Analysis, Measurement, and Accountability Reporting Division

October 19, 2018



TOM TORLAKSON  
State Superintendent of Public Instruction

## Topics (1 – 3)

1. New State Indicator Reported in 2018 California School Dashboard (Dashboard)
2. Dashboard Alternative School Status (DASS)
3. Incorporation of Participation Rate into Academic Indicator

## **Topics (4 – 7)**

4. Identification of Local Educational Agencies (LEAs) for Local Control Funding Formula (LCFF) Support
5. Identification of Schools for Comprehensive and Targeted Support and Improvement
6. New Look and Feel of the 2018 Dashboard
7. Rollout of 2018 Dashboard

## **New State Indicator Data Reported in 2018 Dashboard**

## State Indicators Reported in 2018 Dashboard

- Suspension Rate: Apply 3 x 5 grid at student group level
- Chronic Absenteeism: Reported for first time
- English Learner Progress: Transition year, report assessment results only
- Graduation Rate: Four-year and DASS graduation rate
- College/Career Indicator: New measures added
- Academic: Grades 3 – 8 and Grade 11

California Department of Education

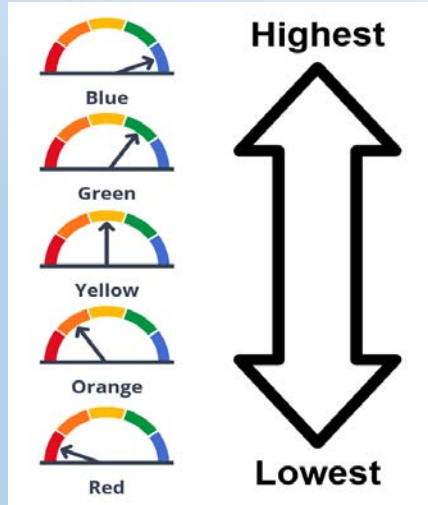
5

## Performance Levels (Colors)

- LEAs, schools, and student groups receive performance levels (or colors) for each **state** indicator **with at least 30** students in the current and prior year
  - “30 or more” determination differs for each state indicator
- Two years of data (**Status** and **Change**) are required to receive a color:
  - Status:** Current year data
  - Change:** Difference between current- and prior-year data

6

## Five Performance Levels



California Department of Education

7

## How Do You Get a Color?

| Level                     | Declined Significantly from Prior Year | Declined from Prior Year | Maintained from Prior Year | Increased from Prior Year | Increased Significantly from Prior Year |
|---------------------------|--|--------------------------|----------------------------|---------------------------|---|
| Very High in Current Year | Yellow                                 | Green                    | Blue                       | Blue                      | Blue                                    |
| High in Current Year      | Orange                                 | Yellow                   | Green                      | Green                     | Blue                                    |
| Medium in Current Year    | Orange                                 | Orange                   | Yellow                     | Green                     | Green                                   |
| Low in Current Year       | Red                                    | Orange                   | Yellow                     | Yellow                    | Yellow                                  |
| Very Low in Current Year  | Red                                    | Red                      | Red                        | Orange                    | Yellow                                  |

- Get a color (Green) by combining:
  - Current year results (High), and
  - Difference from prior year results (Increased)

California Department of Education

8

## Colored Tables

**5X5 Colored Table  
N-Size 150 or Greater**

| Performance Level     | Increased Significantly from Prior Year | Increased from Prior Year | Maintained from Prior Year | Declined from Prior Year | Declined Significantly from Prior Year |
|-----------------------|---|---------------------------|----------------------------|--------------------------|--|
| Very Low Current Year | N/A                                     | Green                     | Blue                       | Blue                     | Blue                                   |
| Low Current Year      | Orange                                  | Yellow                    | Green                      | Green                    | Blue                                   |
| Medium Current Year   | Orange                                  | Orange                    | Yellow                     | Green                    | Green                                  |
| High Current Year     | Red                                     | Orange                    | Orange                     | Yellow                   | Yellow                                 |
| Very High Year        | Red                                     | Red                       | Red                        | Orange                   | Yellow                                 |

**3X5 Colored Table N-Size <150  
(Graduation, Suspension, Chronic\*)**

| Performance Level         | Increased Significantly from Prior Year | Increased from Prior Year | Maintained from Prior Year | Declined from Prior Year | Declined Significantly from Prior Year (greater) |
|---------------------------|---|---------------------------|----------------------------|--------------------------|--|
| Very Low Current Year     | N/A                                     | Green                     | Blue                       | Blue                     | Blue   |
| Low Current Year          | Orange                                  | Yellow                    | Green                      | Green                    | Blue   |
| Medium Current Year       | Orange                                  | Orange                    | Yellow                     | Green                    | Green  |
| High in Current Year      | Red                                     | Orange                    | Orange                     | Yellow                   | Yellow   |
| Very High in Current Year | Red                                     | Red                       | Red                        | Orange                   | Yellow   |

## Dashboard Reports for County Offices of Education and Dashboard Alternative Schools

- County offices of education (COEs) and Dashboard Alternative School Status (DASS) schools will receive a Dashboard report in 2018
- Data from DASS schools will be included in their LEA Dashboard report.
  - Exception:** Because charter schools are treated as LEAs under LCFF, DASS charter schools will not be included in their authorizers' reports

## Modified Methods for DASS Schools

- DASS schools will be held accountable for **all** state indicators currently reported in the Dashboard.
- However, “modified methods” will be used for select state indicators.
  - To fairly evaluate the success and progress of alternative schools that serve high-risk students.
- For the 2018 Dashboard a one-year graduation rate will be calculated for all DASS schools. (Information on the one-year rate is located at <https://www.cde.ca.gov/ta/ac/cm/> under the “Resources” Tab)

## Chronic Absenteeism

- **Status:** Reported for first time
- **Change:** Reported for first time
  - Difference between 2018 and 2017 data
- **Performance Level (Colors):** Reported for first time
- Status, Change, and five-by-five colored table will be determined at November 2018 State Board of Education (SBE) meeting

## Calculating Chronic Absenteeism Indicator

- Students considered chronically absent if they miss 10 percent or more of instructional days they were enrolled to attend
- Includes only students who were enrolled for **at least 31** instructional days
- Assign same weight to all students who meet the chronically absent criteria

## Changes: Graduation Rate Indicator

- New business rules for calculating the four-year cohort rate
- Change no longer uses a 3-year average
  - Class of 2018 *minus* Class of 2017
- DASS graduation rate: DASS schools will be held responsible for the DASS grade 12 graduation rate (based on one-year cohort) and results will be included in LEA graduation rate
  - DASS schools will continue to receive a four-year cohort graduation rate on DataQuest for informational purposes
- Five-year cohort rate will be reported for informational purposes in 2018 Dashboard

## Graduation Rate for DASS Schools Only



California Department of Education

15

## Four-Year vs. DASS Graduation Rate

Students who are counted as **graduates** differ:

| <b>4-Year Cohort Graduation Rate</b><br>(Used for Graduation Rate Indicator) | <b>DASS Graduation Rate</b><br>(Modified Method)   |
|--|--|
| <ul style="list-style-type: none"> <li>Standard diploma</li> </ul>           | <ul style="list-style-type: none"> <li>Standard diploma</li> <li>High School Equivalency certificate (e.g., GED*)</li> <li>Adult education diploma</li> <li>Early graduates (grade eleven students)</li> <li>Certificate of Completion <b>plus</b> eligible for the California Alternative Assessment (<i>pending action by the State Board of Education in November 2018</i>)</li> </ul> <p>*GED: General Educational Development</p> |

California Department of Education

16



## College/Career Indicator (CCI)

- **Status:** Based on Class of 2018
- **Change:** Reported for first time
  - Difference between Class of 2018 and Class of 2017
  - Change cut scores will be determined at November 2018 SBE meeting
- **Performance Level (Colors):** Reported for first time

California Department of Education

## CCI and DASS Schools

- For DASS schools, one-year graduation cohort will be used to determine which students are included in the CCI
- A student's most recent four-years of coursework and exams will be included in their CCI determination
- New CCI measures, which reflect impact that DASS schools have on their students, will be considered for the 2019 Dashboard

California Department of Education

18

## Two New CCI Measures for 2018 Dashboard

**State Seal of  
Biliteracy (SSB)**

**Leadership/Military  
Science**

Note: Approved at September 2018 SBE meeting.

## English Learner Progress Indicator (ELPI)

- Not reported in 2018 Dashboard due to transition to English Language Proficiency Assessments for California (ELPAC)
- The Dashboard will report the percentage of students in each performance level

## **Academic Indicator: Reporting Grade 11 Results**

- In accordance with California's approved Every Student Succeeds Act (ESSA) State Plan, Grade 11 results will be reported in the Academic Indicator
- High Schools and High School Districts will receive a performance level (color) for first time, based on new cut scores approved at November 2018 SBE meeting
- Unified School Districts will continue to have performance levels based on current cut scores established using grade 3-8 results

## **Incorporation of the Participation Rate into the Academic Indicator**

## **Incorporation of the Participation Rate into the Academic Indicator**

- In accordance with California’s approved ESSA State Plan, participation rate will be factored into Academic Indicator
  - The “Distance from Standard” (DFS) will be reduced for districts, schools, and student groups that did not meet the participation requirement of 95 percent.
  - The reduction of DFS will vary at the district, school, and student group levels.

## **Steps Required to Factor in Participation Rate**

1. For each district, school, and student group, and for each subject area, calculate the DFS and the participation rate\*
2. If participation rate is less than 95 percent, calculate the number of points needed to meet the 95 percent target
3. Multiply number (from Step 2) by .25
4. Reduce DFS by number calculated in Step 3.

\*Based on students who take both the Smarter Balanced Summative Assessments and the California Alternate Assessments

## Participation Rate Example

- Solar Middle School has the following schoolwide data for math:
  - 18.9 points above DFS
  - Participation rate of 79% (**16 points** short of 95% target)
- Calculate  $\frac{1}{4}$  of the participation rate shortage:  
 **$0.25 \times 16 = 4$  points**
- Reduce the schoolwide DFS by 4 points:  
 **$18.9 - 4 = 14.9$**

## Identification of LEAs for LCFF Support

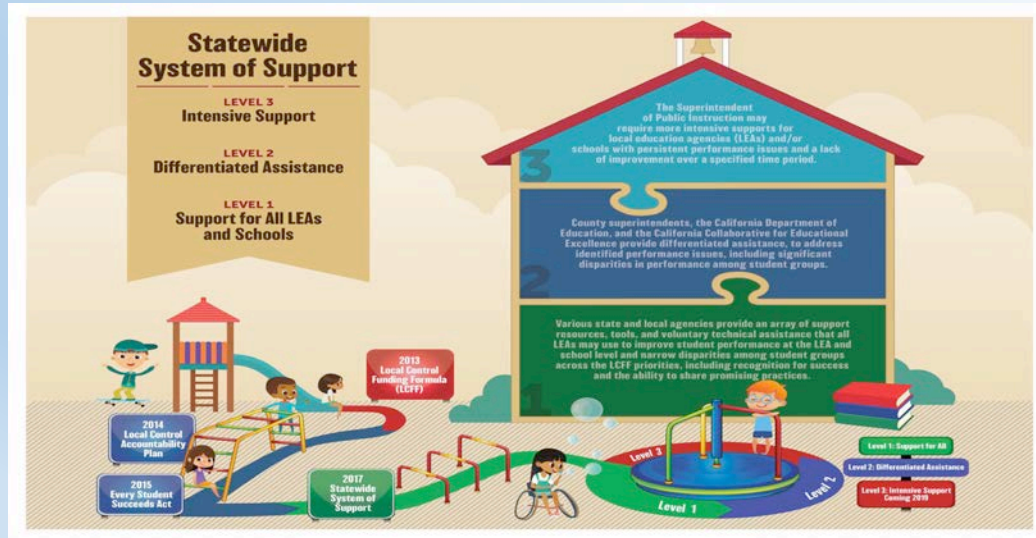
## LEA Eligibility for LCFF Support

- Based on student group performance in each LCFF state priority area
- State and local indicator results used to identify districts and COEs
  - Local indicator data used for first time
  - COEs identified for first time

## Local Indicators

- LEAs measure and report their progress within the appropriate priority area. For each local indicator, the approved standard includes:
  - Measuring LEA progress on the local indicator based on locally available information, and
  - Reporting the results to the LEA's local governing board at a regularly scheduled meeting of the local governing board and to stakeholders and the public through the Dashboard.
- All districts and charter schools must finalize and submit local indicator data **by November 16, 2018**.
- Local Indicator Webinar Series  
(<https://www.cde.ca.gov/ta/ac/cm/localindicators.asp>)

# System of Support



California Department of Education

29

# Identification of Schools for Comprehensive and Targeted Support and Improvement

California Department of Education

30

## Comprehensive Support and Improvement (CSI)

- Two groups of schools are eligible for CSI:
  - Lowest performing 5 percent of Title I schools
  - High schools with graduation rates below 67 percent
- Identification process occurs once every three years

## Lowest Performing 5 Percent of Title I Schools

- CSI criteria (color combinations) included in approved ESSA State Plan
  - Schools with all red indicators
  - Schools with all red but one indicator of any other color
  - Schools with all red and orange indicators
  - Schools with five or more indicators where majority are red



## Graduation Rates Below 67 Percent

- Schools with a graduation rate less than 67 percent **averaged over two years** will be identified for CSI based on 2018 Dashboard results (e.g., Class of 2017 and Class of 2018)

## Targeted Support and Improvement

- Schools with one or more student groups that, for two consecutive years, meet the same criteria used to identify the 5 percent, will be identified for TSI
- Schools will be identified beginning in 2018–19
  - Based on 2016–17 and 2017–18 data

# New Look and Feel of the 2018 Dashboard

## New Look and Feel of the Homepage



# Landing Page

## Sacramento Charter High

Explore information about Sacramento Sample District under California's accountability system. All data shown is from Fall 2017.

|   |  |   |  |
|---|--|---|--|
| <b>English Language Arts</b><br><br>Yellow                                  | <b>Mathematics</b><br><br>Orange                           | <b>English Learner Progress</b><br><br>Blue                 | <b>College / Career</b><br><br>Green   |
| <b>Chronic Absenteeism</b><br><br>Green                                     | <b>Graduation Rate (Grades 9-12)</b><br><br>Green          | <b>Suspension Rate</b><br><br>Green                         | <b>Basics: Teachers, Instructional Materials, Facilities - Priority One</b><br>INDICATOR MET |
| <b>Implementation of Academic Standards - Priority Two</b><br>INDICATOR MET | <b>Parent Engagement - Priority Three</b><br>INDICATOR MET | <b>Local Climate Survey - Priority Six</b><br>INDICATOR MET |  |

37

# Landing Page: Student Population

## Student Population

See the number of students served and explore information about different student populations.

|  |  |  |  |
|--|--|--|--|
| ABOUT THIS DISPLAY<br><b>Enrollment</b><br><br><b>902</b><br><a href="#">View More Information</a> | ABOUT THIS DISPLAY<br><b>Socioeconomically Disadvantaged</b><br><br><b>73.3%</b> | ABOUT THIS DISPLAY<br><b>English Learners</b><br><br><b>3%</b> | ABOUT THIS DISPLAY<br><b>Foster Youth</b><br><br><b>0.2%</b> |
|--|--|--|--|

38

# Landing Page: Glossary of Terms Functionality

## Student Population

See the number of students served and explore information about different student populations.

**Enrollment** ✕

Total number of students enrolled in the State of California. **902**

**Socioeconomically Disadvantaged** ✕

Percentage of students identified as socioeconomically disadvantaged, or coming from a background of poverty.

**English Learners** ✕

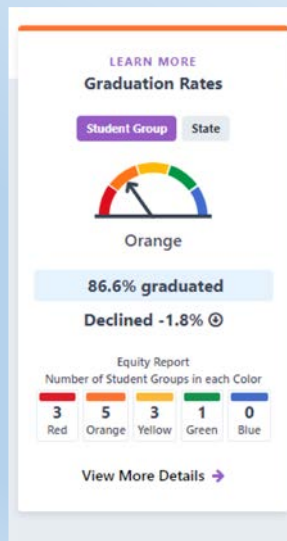
Percentage of students who are learning to communicate effectively in English, typically requiring instruction in both the English language and in their academic courses.

**Foster Youth** ✕

Percentage of students who have been removed from the custody of their parent or guardian by the juvenile court.

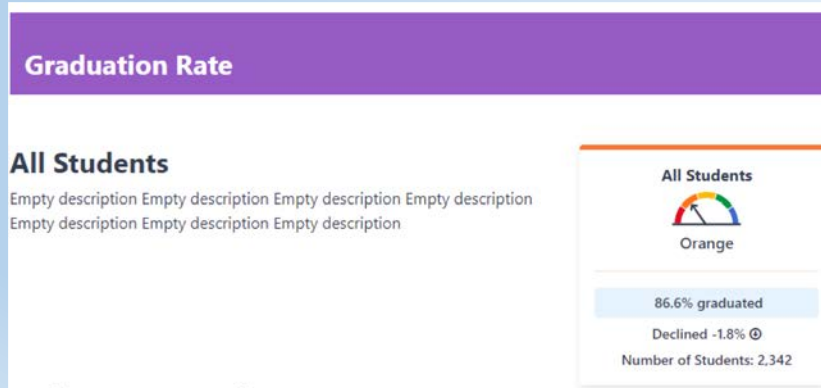
39

# Indicator In-Depth Display



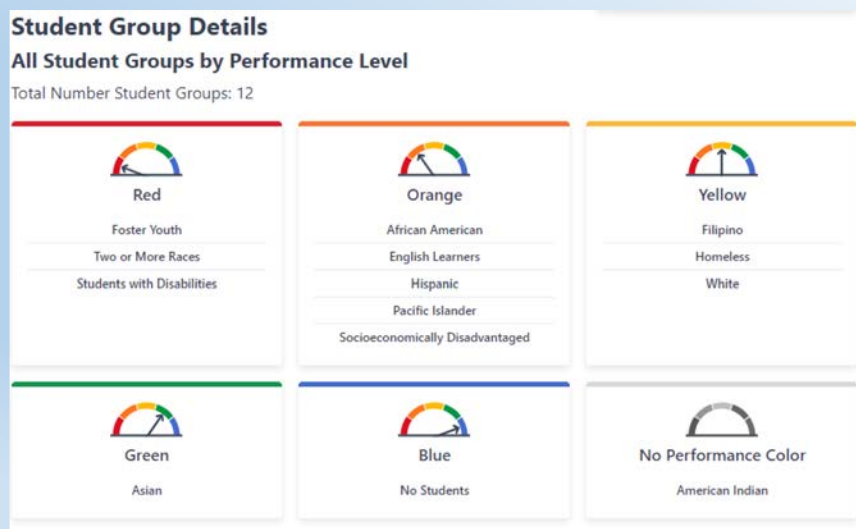
40

## View More Detail Page-All Students Overview



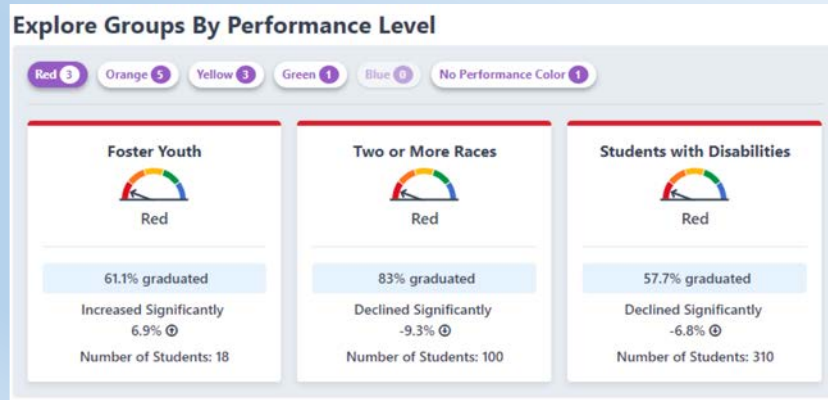
41

## View More Detail Page: All Student Groups by Performance Level



42

## View More Detail: Explore by Performance Level



43

## Rollout of 2018 Dashboard

- November 2018: LEA Rolling Private Preview
  - Webinar on each state indicator will occur during week that indicator data are released
- November 16, 2018: Local Indicators Submission Deadline
- Week of December 3, 2018: Public Release